



ventec

INTERNATIONAL GROUP

騰輝電子

PCB CONSUMABLES



CENTRUM

**LUBRICATED
DRILL ENTRY**

MATERIAL DATASHEET

INTRODUCTION

Centrum has been developed such that the surface of the aluminum has hard, medium, and soft variances of hardness on the drill entry surface. This, combined with an optimized aluminum surface, allows the drill bit to 'center' on the target location accurately

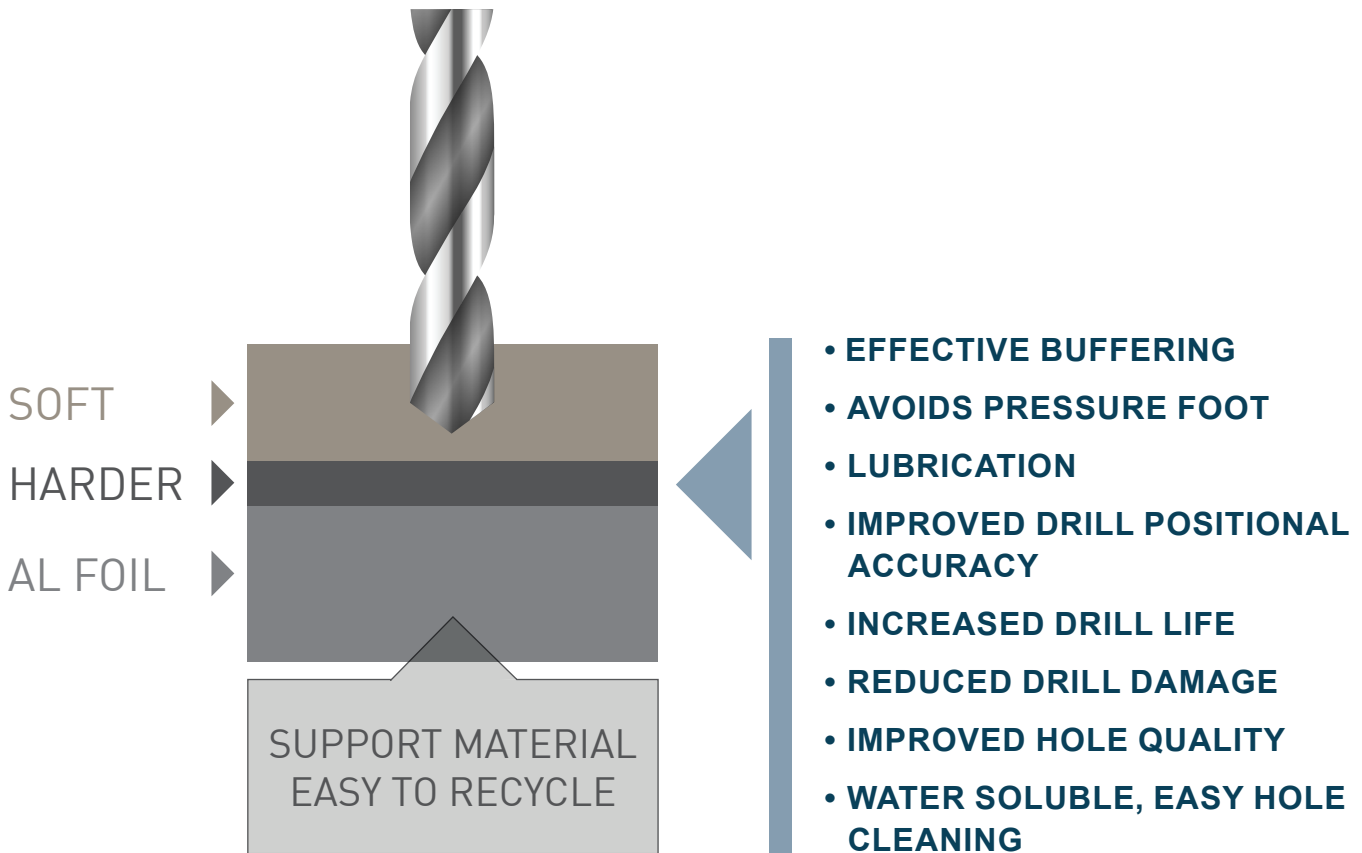
prior to entering the 'drill' zone of the PCB, thus effectively reducing the chances of drill wander and breakout. The thermal dissipation and lubrication properties significantly extend drill life, process capability and hole wall quality.

GENERAL INFORMATION

- The proprietary coating provides a unique surface for the drill to center and stabilize before entering the laminate surface
- Greater hole positional accuracy and increased cpk at the drilling process
- Lubricating and heat dissipating design decreases hole roughness
- Improves drill positional accuracy, reducing drill deviation through the stack and reduced incidence of burring
- Reduction in heat and wear of drill bit, thus increasing drill bit life and drill breakage rate
- Hydrophilic lubricant allowing easy removal of drilling debris
- Allows for increased stack height, thus increasing drill capacity and machine utilization / efficiency
- Significantly improves quality of drilled holes, particularly micro hole drilling required to manufacture to-days BGA and micro-BGA, HDI PCB's.

Version: 22/03/2018

CONSTRUCTION AND AVAILABILITY



PRODUCT CODE	FILM THICKNESS	ALUMINUM THICKNESS	TOTAL
CENTRUM050150	0.050mm	0.150mm	0.200mm
CENTRUM050100	0.050mm	0.100mm	0.150mm

AVAILABILITY

ALL COMMON SIZES TO SUIT STANDARD PANELS

DRILL ACCURACY COMPARISONS

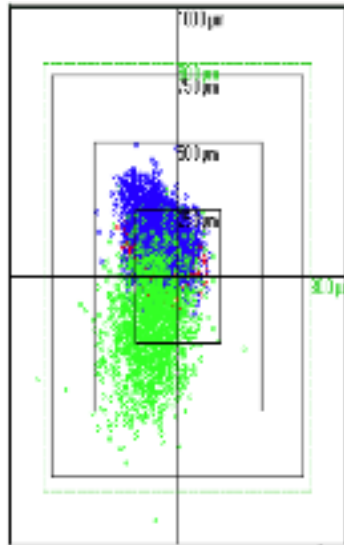
Competitor (BE +SB). Tests carried out independently at Impex.

KEY

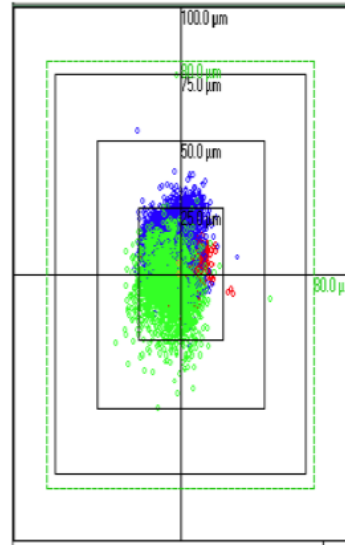
0.25MM

0.35MM

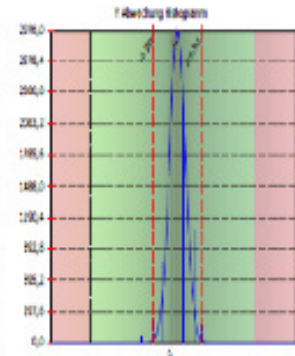
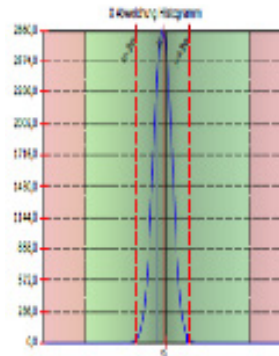
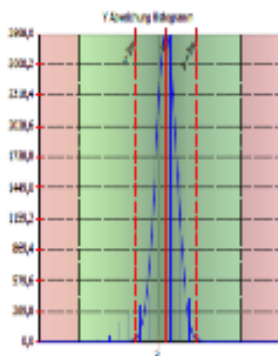
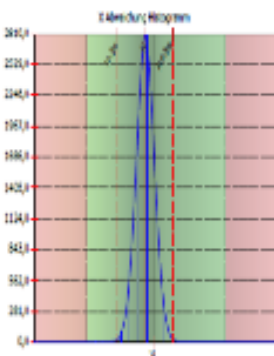
1.6MM



BE & SB



AL150050 & STANDARD BACKING



SUMMARY

Centrum offers a cost effective solution to todays 'high accuracy' drilling challenges

- Improved yield and machine utilization.
- Water soluble and 'grease free' for contamination free holes, closer tolerances and improved drill accuracy.
- Excellent heat dissipation for extended drill bit life.
- Composite construction designed for clean drill bits and quick ejection of waste.
- Allows for lower surface feet per minute drilling and an increased feed rate.
- Reduces or eliminates hole wall smearing, increasing drill bit life and improves efficiency of desmear process.
- Recyclable.

Version: 22/03/2018